



MS-4000

Air-borne gamma-ray spectrometer

The MS-4000 airborne gamma-ray sensor is developed specifically for effective mineral exploration. A detector used by geophysical survey companies, geotechnical consultants, and research institutes to capture naturally occurring radionuclide variation in large areas. It can be used in lightweight airplanes to capture high resolution NORM data.

medusa Detector Operating System (mDOS)

A uniform interface for all our products. Whether doing an air-borne survey, locating a lost source with a UAV, or using our detector for a handheld survey for mapping the environment, you can count on using the same familiar interface. This piece of software is developed for in-the-field usage. Optimized for ease of use and to automate your survey workflow.

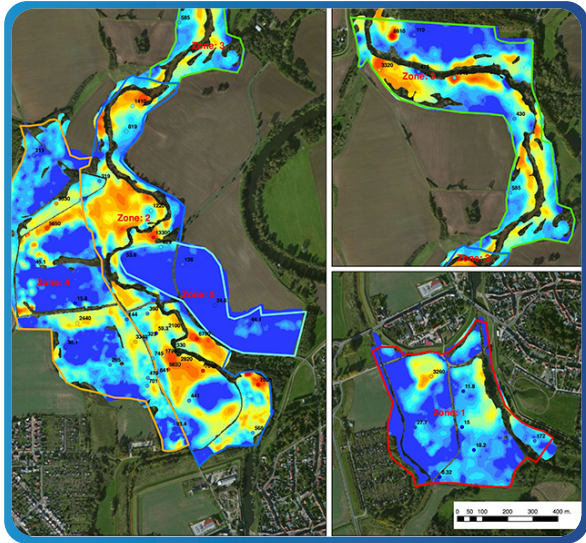
KEY FEATURES

- ✓ 27 Kg, easy to integrate in airplanes
- ✓ Optimized for ease of use
- ✓ Integrated data storage and processing
- ✓ Life-long feature updates



TYPICAL APPLICATIONS

- ✓ Air-borne measurements
- ✓ Integrated in vehicles
- ✓ NORM characterization
- ✓ Mineral mapping



MAPPING MADE EASY

The Medusa gamma-ray spectrometers can effectively map the radionuclide concentration of an area. Through its automated onboard data processing, the detector calculates the concentrations in the ground. This automation facilitates the generation of real-time maps, simplifying the evaluation of potential critical radionuclide contamination in the area. With this advanced system, conducting a survey is made easy and doesn't require specialized knowledge of gamma-ray data processing.

TECHNICAL SPECS:

Gamma-ray spectrometer

Scintillation crystal:	4×4×16" (4 L) CsI
Mapping speeds:	> 60 km/h
Recording frequency:	up to 5 hz
Online radionuclide analysis:	^{40}K , ^{238}U , ^{232}Th and ^{137}Cs

GPS

Type:	uBlox ZED-P9P
Accuracy:	1.5 m CEP
RTK accuracy:	<1 cm
Signals:	GLOSNASS, Bei-Dou, Galileo

Data

Format:	JSON, NMEA, CSV
Streaming:	RS-232, ethernet and Wi-Fi
Sensors:	Spectrometer, GPS, PTH
Internal storage:	16 GB

Mechanical

Dimension:	17(h) x 20(w) 86(l) cm
Weight:	27 Kg
Operating T:	-20 to +65 °C
IP rating:	IP65

Electrical

Input voltage:	12-35V
Power consumption:	3W (avg), 6W (max)
Battery:	Car battery

Connectivity

Wi-Fi:	2.4 and 5 Ghz
Ethernet:	100 Mbps
Port:	RS-232, USB (optionally)

CONTACT US:

Medusa Radiometrics

Skagerrak 26, 9723 JR, Groningen
The netherlands

+31 50 5770280

info@medusa-online.com

www.medusa-radiometrics.com