

Errata to

Seismic Petrophysics in Quantitative Interpretation, 2016 printing

by Lev Vernik, Investigations in Geophysics Series No. 18

Chapter 1

page 14, equation 21 should be:

$$k = B \frac{D_m^2 \phi^3}{(1 - \phi)^2}$$

page 24, equation 35 should be: $C_{13} = \sqrt{2 C_{33}(C_{33} - C_{44}) + (C_{33} - C_{44})^2} - C_{44}$

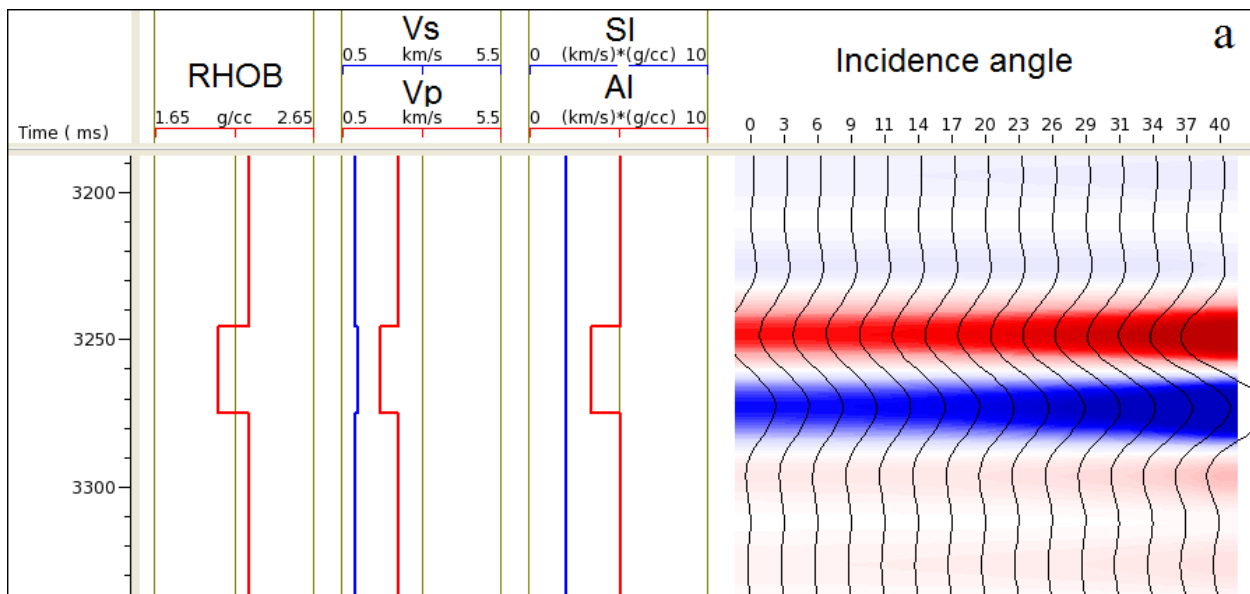
Chapter 3

page 51, the caption to Figure 6 should read:

Figure 6. Comparison of the dry frame P-wave modulus of arenites with hypothetical spherical pores and cracks, as a function of porosity and crack density, produced with the Mori-Tanaka (MT) and Kuster-Toksöz (KT) theories. The upper two overlapping curves are the MT scheme realization for spherical pores and zero crack density and the KT model for spherical pores; these curves also coincide with the Hashin-Shtrikman upper bound. For the lower three KT curves, the crack aspect ratio is 0.001 and the crack porosities of 0.042, 0.084, and 0.125% are derived from crack densities of 0.1, 0.2, and 0.3, respectively.

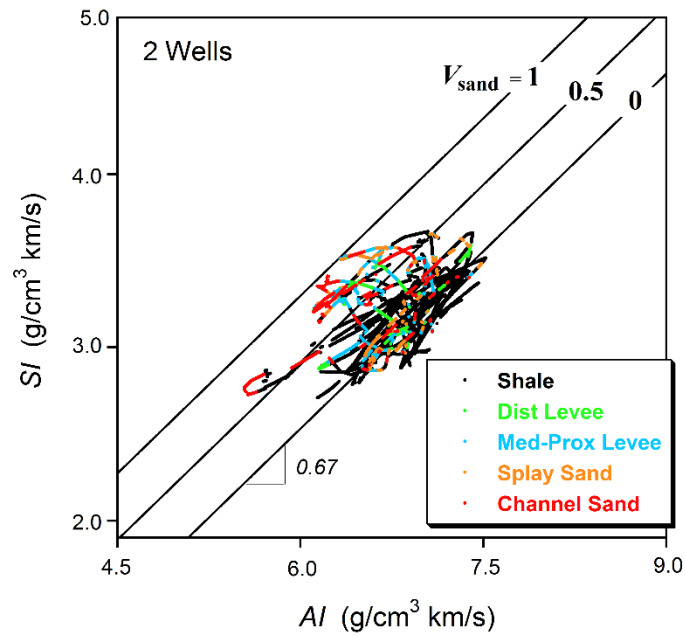
Chapter 4

page 93, Figure 4a should be:



Chapter 5

page 116, Figure 13 should be:



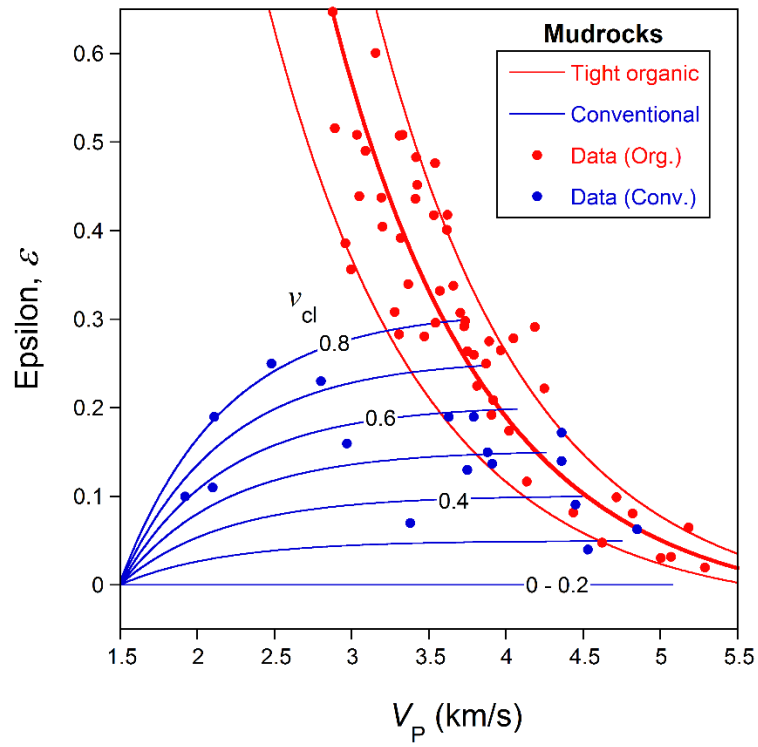
Chapter 7

page 173, left column, the text underneath equation 4 should be:

where K_0 is the stress-coupling factor, S_v is the vertical stress, P_p is the pore pressure, β_3 and β_1 are the Biot poroelastic coefficients normal to bedding and parallel to bedding, respectively, and G in the subscripts refers to gradient.

page 175, equation 7 should be: $\varepsilon = b \exp[-V_p(0^\circ)] - 0.03$,

page 175, Figure 7 should be:



page 181, Figure 12 should be:

