

Insights Beyond the Obvious

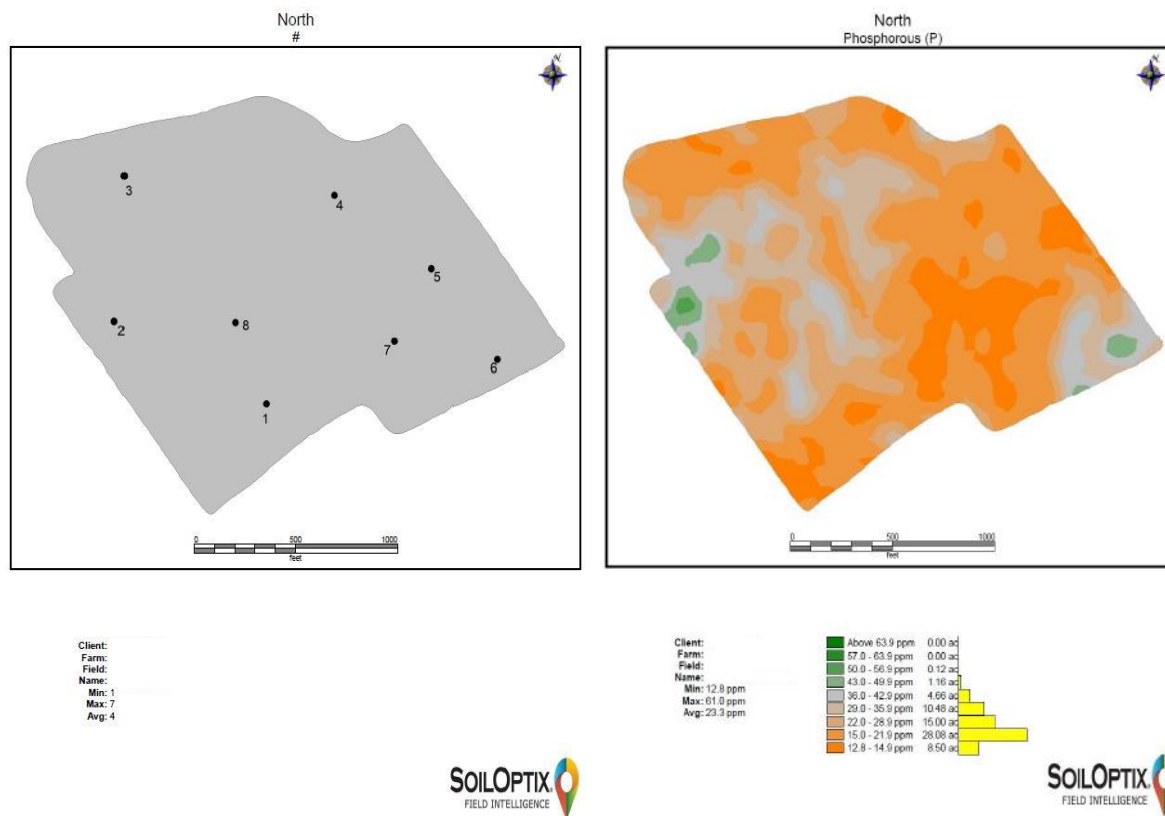
Hidden "Easter Eggs"

Phosphorus Pockets

SoilOptix® identified 2 higher pockets of phosphorus compared to the rest of the field.

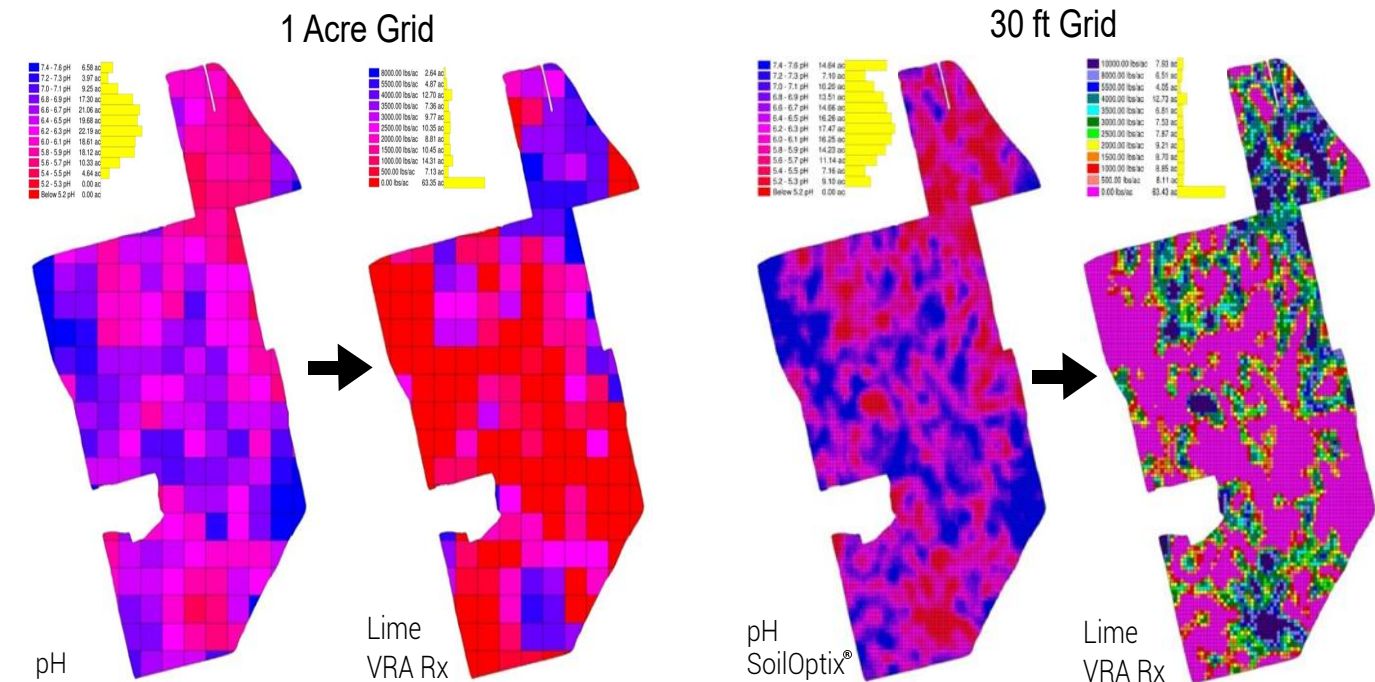
Northwest pocket was caused by manure pile runoff.

Southeast pocket was remnants of a small compost pile that was removed 1 year prior to surveying.



SoilOptix® Applications

VRA Lime - 150 Acres



Broad areas of concern addressed by 1 acre grid.

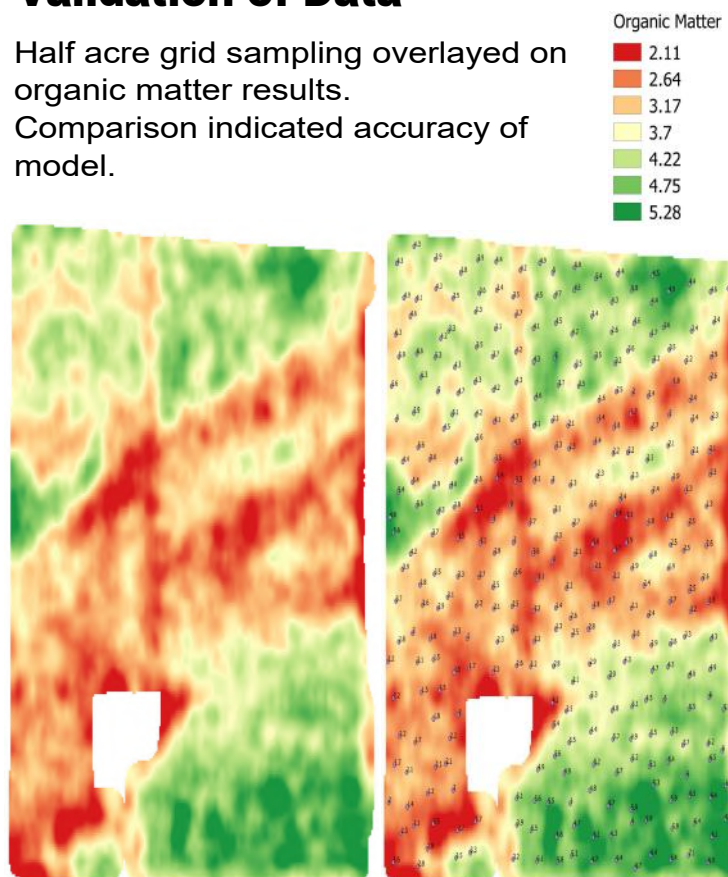
Total lime: 104.7 tonnes
63.35ac at 0 ton/ac

SoilOptix® further defined areas of concern, applying higher rates on land needing more lime.

Total lime: 142.9 tonnes
63.43ac at 0 ton/ac.

Validation of Data

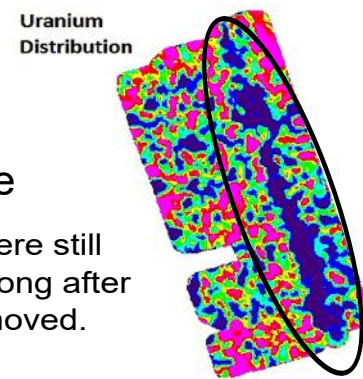
Half acre grid sampling overlaid on organic matter results. Comparison indicated accuracy of model.



Natural Features

Old Railway Line

Uranium deposits were still detected in the soil long after the railroad was removed.

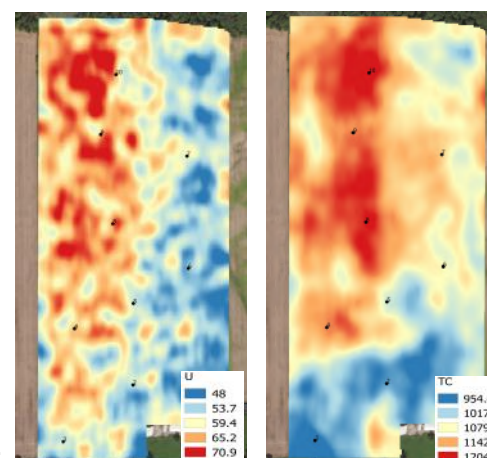


Field History

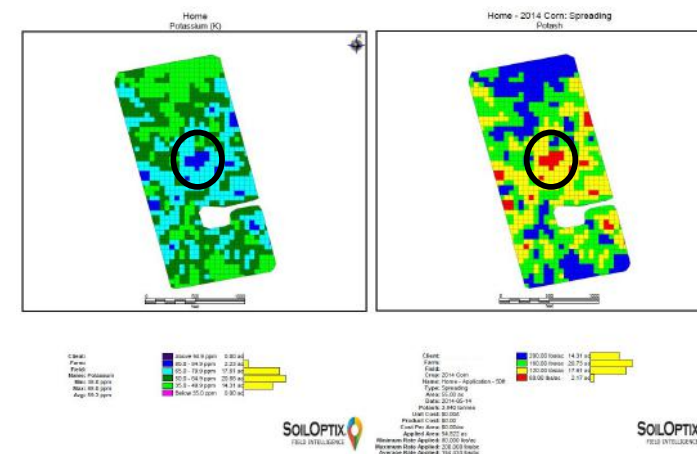
West side-continuous tillage

East side-pasture.

Now worked as one field but managed independently.



VRA Potash 55 Acres



SoilOptix® indicated a spike in Potassium.

Upon validation, high K reflected a broken tile in the field.

Resulting VRA prescription reduced fertilizer input and saved the grower on input costs.

VRA Seeding Density Corn 150 Acres

20 ft Grid 3 Zones 4% Yield Gain

